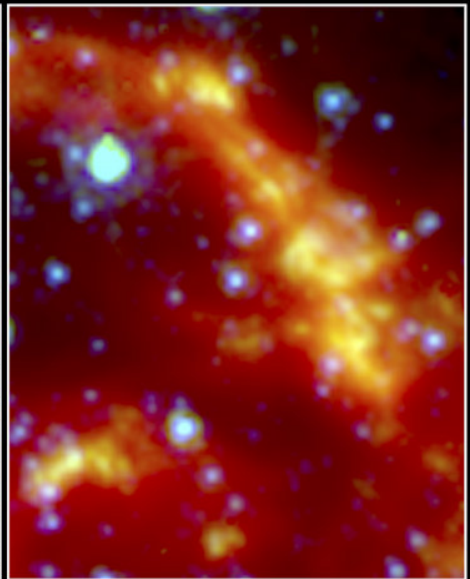
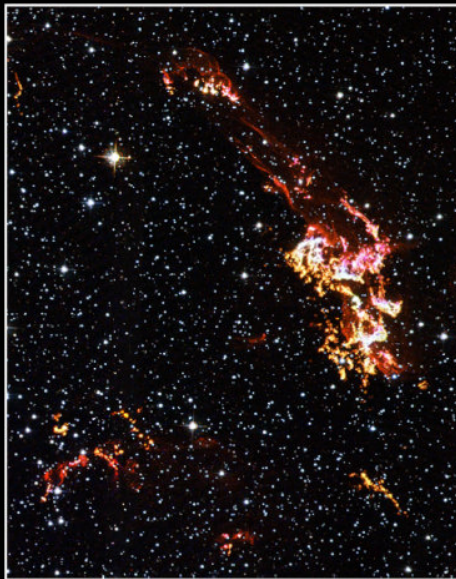
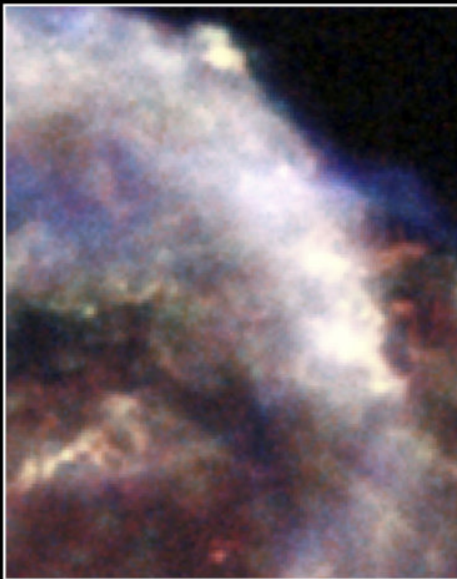
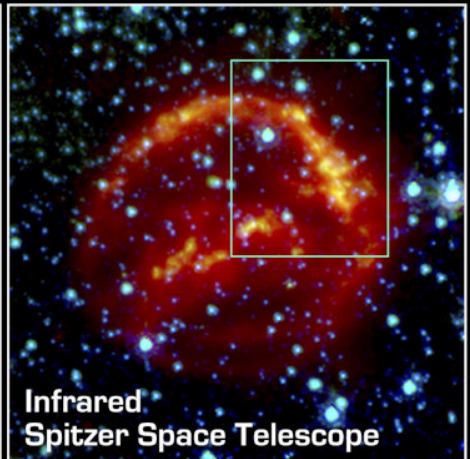
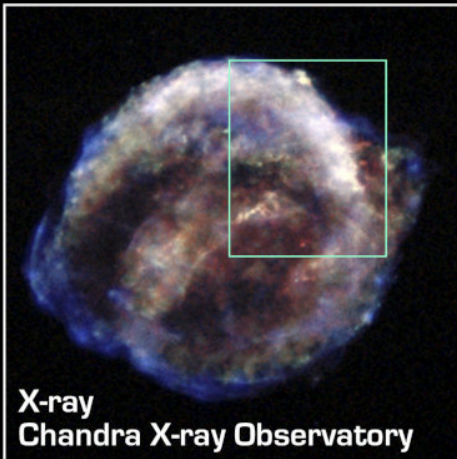




The Great Observatories Program

Great Observatories	2
History of the program.....	2
Strengths	4
Impact	4
Synergies.....	5
Successors to GO instruments	6
Later programs	6
Next Great Observatory	6
Sources.....	7
Image sources.....	7



Kepler's Supernova Remnant • SN 1604
NASA, ESA / JPL-Caltech / R. Sankrit & W. Blair (Johns Hopkins University)

ssc2004-15b

A labeled space image comparing views of a supernova remnant by three different Great observatories.^a

NASA's series of Great Observatories satellites are four large, powerful space-based astronomical telescopes launched between 1990 and 2003. They were built with different technology to examine specific wavelength/energy regions of the electromagnetic spectrum: gamma rays, X-rays, visible and ultraviolet light, and infrared light. Two remain operational as of 2020.

GREAT OBSERVATORIES

The Hubble Space Telescope (HST) primarily observes visible light and near-ultraviolet. It was launched in 1990 aboard the Space Shuttle Discovery during STS-31. In 1997 the STS-82 servicing mission added capability in the near-infrared range, and in 2009 the STS-125 mission fixed the telescope and extended its projected service life.

The Compton Gamma Ray Observatory (CGRO) primarily observed gamma rays, though it extended into hard x-rays as well. It was launched in 1991 aboard Atlantis during STS-37 and was de-orbited in 2000 after a gyroscope failed.

The Chandra X-ray Observatory (CXO) primarily observes soft X-rays. It was launched in 1999 aboard Columbia during STS-93 into an elliptical high-Earth orbit, and was initially named the Advanced X-ray Astronomical Facility (AXAF).

The Spitzer Space Telescope (SST) observed the infrared spectrum. It was launched in 2003 aboard a Delta II rocket into an Earth-trailing solar orbit. Depletion of its liquid helium coolant in 2009 reduced its functionality, leaving it with only two short-wavelength imaging modules. It was removed from service and placed into safe-mode on January 30, 2020.

The Hubble Space Telescope and Chandra X-ray Observatory continue to operate as of early 2020.

Hubble was originally intended to be retrieved and returned to Earth by the Space Shuttle, but the retrieval plan was later

abandoned. On October 31, 2006, NASA Administrator Michael D. Griffin gave the go-ahead for a final refurbishment mission. The 11-day STS-125 mission by Space Shuttle Atlantis, launched on 11 May 2009,¹ installed fresh batteries, replaced all gyroscopes, replaced a command computer, fixed several instruments, and installed the Wide Field Camera 3 and the Cosmic Origins Spectrograph.²

One of the three gyroscopes on the Compton Gamma Ray Observatory failed in December 1999. Although the observatory was fully functional with two gyroscopes, NASA judged that failure of a second gyroscope would result in inability to control the satellite during its eventual return to earth due to orbital decay. NASA chose instead to preemptively de-orbit Compton on June 4, 2000.³ Parts that survived reentry splashed into the Pacific Ocean.

Spitzer was the only one of the Great Observatories not launched by the Space Shuttle. It was originally intended to be so launched, but after the Challenger disaster, the Centaur LH2/LOX upper stage that would have been required to push it into a heliocentric orbit was banned from Shuttle use. Titan and Atlas rockets were canceled for cost reasons. After redesign and lightening, it was launched by a Delta II rocket instead. ; it was called the Space Infrared Telescope Facility (SIRTF) before launch.

HISTORY OF THE PROGRAM

Hubble Space Telescope

The history of the Hubble Space Telescope can be traced back to 1946, when the astronomer Lyman Spitzer wrote the paper *Astronomical advantages of an extraterrestrial observatory*.⁴ Spitzer devoted much of his career to pushing for a space telescope.

The 1966–1972 Orbiting Astronomical Observatory missions demonstrated the important role space-based observations could play in astronomy. In 1968, NASA developed firm plans for a space-based reflecting telescope with a 3-meter mirror, known provisionally as the Large Orbiting Telescope or Large Space Telescope (LST), with a launch slated for 1979.⁵ Congress eventually approved funding of US\$36,000,000 for 1978, and the design of the LST began in earnest, aiming for a launch date of 1983. During the early 1980s, the telescope was named after Edwin Hubble.

Gamma Ray Program

Gamma rays had been examined above the atmosphere by several early space missions. During its High Energy Astronomy Observatory Program in 1977, NASA announced plans to build a "great observatory" for gamma-ray astronomy. The Gamma Ray Observatory (GRO), renamed Compton Gamma-Ray



Illustration of Chandra^b

Observatory (CGRO), was designed to take advantage of the major advances in detector technology during the 1980s. Following 14 years of effort, the CGRO was launched on 5 April 1991.⁶

Chandra X-Ray Observatory History

In 1976 the Chandra X-ray Observatory (called AXAF at the time) was proposed to NASA by Riccardo Giacconi and Harvey Tananbaum. Preliminary work began the following year at Marshall Space Flight Center (MSFC) and the Smithsonian Astrophysical Observatory (SAO). In the meantime, in 1978, NASA launched the first imaging X-ray telescope, Einstein (HEAO-2), into orbit. Work continued on the Chandra project through the 1980s and 1990s. In 1992, to reduce costs, the spacecraft was redesigned. Four of the twelve planned mirrors were eliminated, as were two of the six scientific instruments. Chandra's planned orbit was changed to an elliptical one, reaching one third of the way to the Moon's at its farthest point. This eliminated the possibility of improvement or repair by the Space Shuttle but put the observatory above the Earth's radiation belts for most of its orbit.

Spitzer History

By the early 1970s, astronomers began to consider the possibility of placing an infrared telescope above the obscuring effects of Earth's atmosphere. Most of the early concepts, envisioned repeated flights aboard the NASA Space Shuttle. This approach



Compton Gamma Ray Observatory drifts away from the space shuttle Atlantis on April 7, 1991.^d

was developed in an era when the Shuttle program was presumed to be capable of supporting weekly flights of up to 30 days duration. In 1979, a National Research Council of the National Academy of Sciences report, *A Strategy for Space Astronomy and Astrophysics for the 1980s*, identified a Shuttle Infrared Telescope Facility (SIRTF) as "one of two major astrophysics facilities [to be developed] for Spacelab," a Shuttle-borne platform.

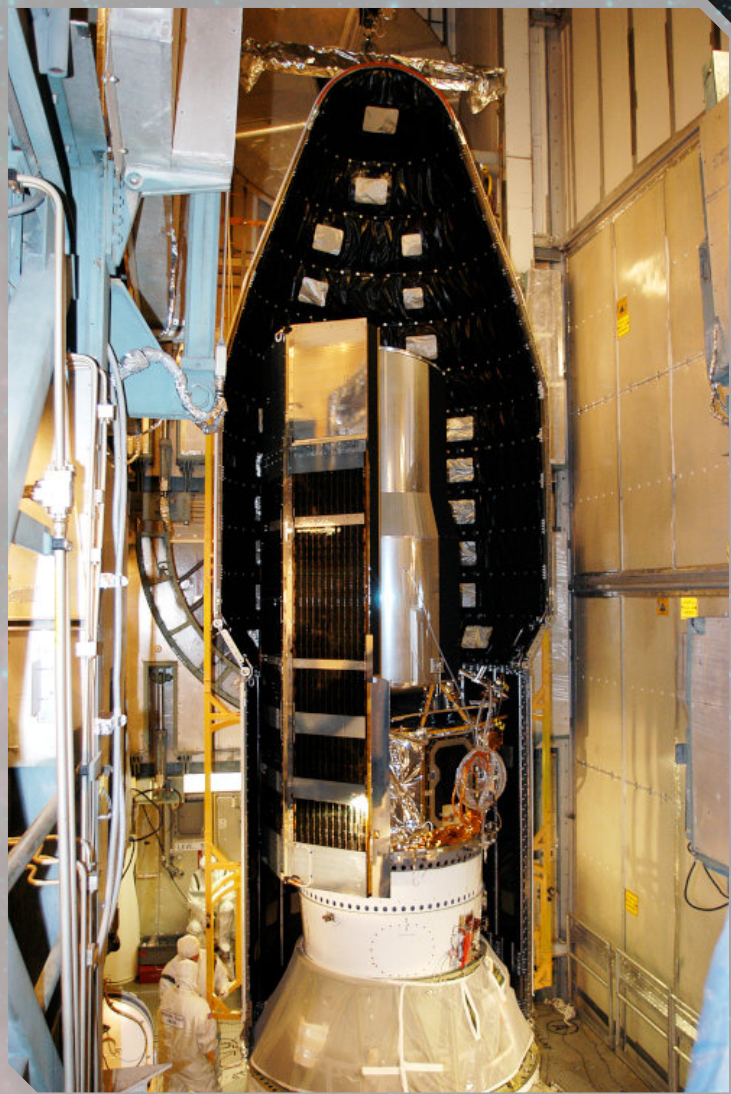
The launch of the Infrared Astronomical Satellite, an Explorer-class satellite designed to conduct the first infrared survey of the sky led to anticipation of an instrument using new infrared detector technology. By September 1983 NASA was considering the "possibility of a long duration [free-flyer] SIRTF mission." The 1985 Spacelab-2 flight aboard STS-51-F confirmed the Shuttle environment was not well suited to an onboard infrared telescope, and a free-flying design was better. The first word of the name was changed from Shuttle so it would be called the Space Infrared Telescope Facility.^{7,8}

Great Observatory Origin

The concept of a Great Observatory program was first proposed in the 1979 NRC report "A Strategy for Space Astronomy and Astrophysics for the 1980's." This report laid the essential groundwork for the Great Observatories and was chaired by Peter Meyer (through June 1977) and then by Harlan J. Smith (through publication). In the mid-1980s it was further advanced by all of the astrophysics Division Directors at NASA headquarters, including Frank Martin and Charlie Pellerin. NASA's "Great Observatories" program used four separate satellites, each designed to cover a different part of the spectrum in ways which terrestrial systems could not. This perspective enabled



Space Shuttle Discovery launching Hubble during the STS-31 mission on April 24, 1990.^c



Spitzer on Earth being readied for launch.^e

the proposed X-ray and InfraRed observatories to be appropriately seen as a continuation of the astronomical program begun with Hubble and CGRO rather than competitors or replacements.^{9,10}

STRENGTHS

Each observatory was designed to push the state of technology in its intended wavelength region. Since the Earth's atmosphere prevents x-rays, gamma-rays and far-infrared radiation from reaching the ground, space missions were essential for the Compton, Chandra and Spitzer observatories.

Hubble also benefits from being above the atmosphere, as the atmosphere blurs ground-based observations of very faint objects, decreasing spatial resolution (however brighter objects can be imaged in much higher resolution than by Hubble from the ground using astronomical interferometers or adaptive optics). Larger, ground-based telescopes have only recently matched Hubble in resolution for near-infrared wavelengths of faint objects. Being above the atmosphere eliminates the problem of airglow, allowing Hubble to make observations of ultra-faint objects. Ground-based telescopes cannot compensate for

airglow on ultrafaint objects, and so very faint objects require unwieldy and inefficient exposure times. Hubble can also observe at ultraviolet wavelengths which do not penetrate the atmosphere.

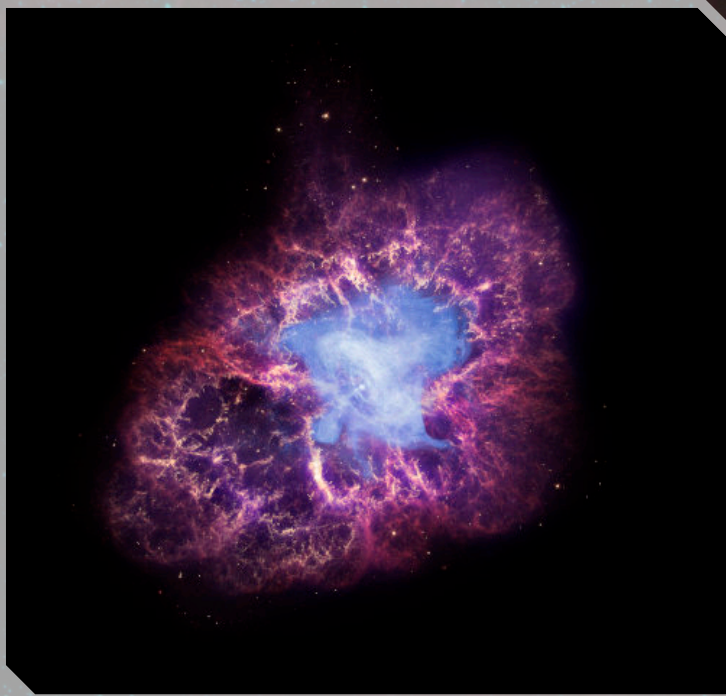
Compton observed in gamma rays, which do not penetrate the lower atmosphere. It was much larger than any gamma-ray instruments flown on the previous HEAO missions, opening entirely new areas of observation. It had four instruments covering the 20 keV to 30 GeV energy range, which complemented each other's sensitivities, resolutions, and fields of view. Gamma rays are emitted by various high-energy and high-temperature sources, such as black holes, pulsars, and supernovae.¹¹

Chandra similarly had no ground predecessors. It followed the three NASA HEAO Program satellites, notably the highly successful Einstein Observatory, which was the first to demonstrate the power of grazing-incidence, focusing X-ray optics, giving spatial resolution an order of magnitude better than collimated instruments (comparable to optical telescopes), with an enormous improvement in sensitivity. Chandra's large size, high orbit, and sensitive CCDs allowed observations of very faint x-ray sources.

Spitzer also observes at wavelength largely inaccessible to ground telescopes. It was preceded in space by NASA's smaller IRAS mission and ESA's large ISO telescope. Spitzer's instruments took advantage of the rapid advances in infrared detector technology since IRAS, combined with its large aperture, favorable fields of view, and long life. Science returns have been accordingly outstanding. Infrared observations are necessary for very distant astronomical objects where all the visible light is redshifted to infrared wavelengths, for cool objects which emit little visible light, and for regions optically obscured by dust.

IMPACT

All four telescopes have had a substantial impact on astronomy. The opening up of new wavebands to high resolution, high sensitivity observations by the Compton, Chandra and Spitzer has revolutionized our understanding of a wide range of astronomical objects, and has led to the detection of thousands of new, interesting objects. Hubble has had a much larger public and media impact than the other telescopes, although at optical wavelengths Hubble has provided a more modest improvement in sensitivity and resolution over existing instruments. Hubble's capability for uniform high-quality imaging of any astronomical object at any time has allowed accurate surveys and comparisons of large numbers of astronomical objects. The Hubble Deep Field observations have been very important for studies of distant galaxies, as they provide rest-frame ultraviolet images of these objects with a similar number of pixels across the galaxies as previous ultraviolet images of closer galaxies, allowing direct comparison. The James Webb Space Telescope



Chandra, Hubble, and Spitzer composite image of the Crab Nebula (2009).^f

will provide an even greater step forward, providing rest-frame visible light images of even more distant galaxies which can be directly compared with images of nearby galaxies at visible light wavelengths.

SYNERGIES

Aside from inherent mission capabilities (particularly sensitivities, which cannot be replicated by ground observatories), the Great Observatories program allows missions to interact for greater science return. Different objects shine in different wavelengths, but training two or more observatories on an object allows a deeper understanding.

High-energy studies (in x-rays and gamma rays) have had only moderate imaging resolutions so far. Studying x-ray and gamma-ray objects with Hubble, as well as Chandra and Compton, gives accurate size and positional data. In particular, Hubble's resolution can often discern whether the target is a standalone object, or part of a parent galaxy, and if a bright object is in the nucleus, arms, or halo of a spiral galaxy. Similarly, the smaller aperture of Spitzer means that Hubble can add finer spatial information to a Spitzer image.

Ultraviolet studies with Hubble also reveal the temporal states of high-energy objects. X-rays and gamma rays are harder to detect with current technologies than visible and ultraviolet. Therefore, Chandra and Compton needed long integration times to gather enough photons. However, objects which shine in x-rays and gamma rays can be small, and can vary on timescales of minutes or seconds. Such objects then call for followup with Hubble or the Rossi X-ray Timing Explorer, which can measure

Timeframe	Active Observatories
Late 1991	Hubble, Compton
Late 1999	Hubble, Compton, Chandra
Mid 2000	Hubble, Chandra
Late 2003	Hubble, Chandra, Spitzer
Early 2020	Hubble, Chandra

Which Satellites were active and could be used together changed over time

details in angular seconds or fractions of a second, due to different designs. Rossi's last full year of operation was 2011.

The ability of Spitzer to see through dust and thick gases is good for galactic nuclei observations. Massive objects at the hearts of galaxies shine in x-rays, gamma rays, and radio waves, but infrared studies into these clouded regions can reveal the number and positions of objects.

Hubble, meanwhile, has neither the field of view nor the available time to study all interesting objects. Worthwhile targets are often found with ground telescopes, which are cheaper, or with smaller space observatories, which are sometimes expressly designed to cover large areas of the sky. Also, the other three Great Observatories have found interesting new objects, which merit diversion of Hubble.

One example of observatory synergy is Solar System and asteroid studies. Small bodies, such as small moons and asteroids, are too small and/or distant to be directly resolved even by Hubble; their image appears as a diffraction pattern determined by brightness, not size. However, the minimum size can be deduced by Hubble through knowledge of the body's albedo. The maximum size can be determined by Spitzer through knowledge of the body's temperature, which is largely known from its orbit. Thus, the body's true size is bracketed. Further spectroscopy by Spitzer can determine the chemical composition of the object's surface, which limits its possible albedos, and therefore sharpens the low size estimate.

At the opposite end of the cosmic distance ladder, observations made with Hubble, Spitzer and Chandra have been combined in the Great Observatories Origins Deep Survey to yield a multi-wavelength picture of galaxy formation and evolution in the early Universe.

Synergistic Discoveries

When great observatories worked together to make special discoveries or observations: Reported in March 2016, Spitzer and Hubble were used to discover the most distant-known galaxy, GN-z11. This object was seen as it appeared 13.4 billion years ago.^{12,13} (List of the most distant astronomical objects)

SUCCESSORS TO GO INSTRUMENTS

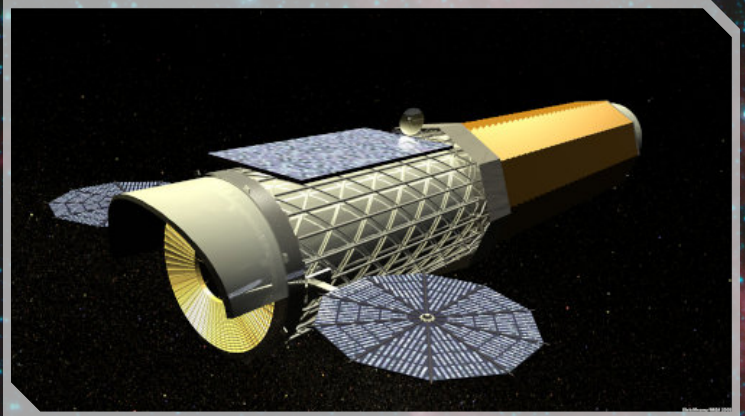
James Webb Space Telescope (JWST) — the JWST, previously known as the NGST (Next Generation Space Telescope) is projected to launch in March 2021, and will work simultaneously with Hubble until its mission ends and the JWST replaces it.¹⁴ Its segmented, deployable mirror will be over twice as wide, increasing angular resolution noticeably, and sensitivity dramatically. Unlike Hubble, JWST will observe in the infrared, in order to penetrate dust at cosmological distances. This means it will continue some Spitzer capabilities, while some Hubble capabilities will be lost in the visible and especially the ultraviolet wavelengths.

The Fermi Gamma-ray Space Telescope, formerly GLAST, the Gamma Ray Large Area Space Telescope, is a follow-on to Compton launched on June 11, 2008.¹⁵ GLAST is more narrowly defined, and much smaller; it will carry only one main instrument and a secondary experiment. Other missions, such as HETE-2, launched in 2000, and Swift, launched in 2004, will complement GLAST. The Ramaty High-Energy Solar Spectroscopic Imager (RHESSI), launched in 2002, observes in some Compton and Chandra wavelengths, but is pointed at the Sun at all times. Occasionally it observes high-energy objects which happen to be in the view around the Sun.

Another large, high-energy observatory is INTEGRAL, Europe's INTERNATIONAL Gamma Ray Astrophysics Laboratory, launched in 2002. It observes in similar frequencies to Compton. INTEGRAL uses a fundamentally different telescope technology, coded-aperture masks. Thus, its capabilities are complementary to Compton and Fermi.



Main mirror of the James Webb Space Telescope assembled at Goddard Space Flight Center, May 2016.⁸



IXO was considered as a possible future X-ray observatory.^h

JWST will exceed Spitzer's performance in near-infrared, and the European Space Agency's Herschel Space Observatory, operational from 2009 to 2013, has exceeded Spitzer in the far-infrared. The SOFIA (Stratospheric Observatory For Infrared Astronomy) airborne platform observes in near- and mid-infrared. SOFIA has a larger aperture than Spitzer, but lower relative sensitivity.

LATER PROGRAMS

The Beyond Einstein program will seek to develop new areas of science. Constellation-X and the Laser Interferometer Space Antenna (LISA) have been referred to by NASA as the Einstein Great Observatories, to differentiate them from the current generation. However, they are not a part of the Great Observatories program.¹⁶

The International Solar-Terrestrial Physics Science Initiative, in the spirit of the Great Observatories program, is a group of instruments to study the Sun and related electromagnetic phenomena near Earth.¹⁷

NEXT GREAT OBSERVATORY

In 2016, NASA began considering four different Flagship space telescopes,¹⁸ they are the Habitable Exoplanet Imaging Mission (HabEx), Large UV Optical Infrared Surveyor (LUVOIR), Origins Space Telescope, and Lynx X-ray Surveyor. In 2019 the four teams will turn their final reports over to the National Academy of Sciences, whose independent Decadal Survey committee advises NASA on which mission should take top priority. Selection would take place in late 2020, and launch approximately in 2035.¹⁸

SOURCES

This document is based on the Wikipedia article "Great Observatories program", which is released under the Creative Commons Attribution-Share-Alike License 3.0, retrieved on the 26.05.2020.

Sources cited by the article:

1. ^ "NASA Updates Space Shuttle Target Launch Dates". NASA. Retrieved 2008-05-22.
2. ^ Boyle, Alan (2006-10-31). "NASA gives green light to Hubble rescue". NBC News. Retrieved 2007-01-10.
3. ^ Harwood, William. "NASA space telescope heads for fiery crash into Pacific". Retrieved 2020-02-02.
4. ^ Spitzer, L., REPORT TO PROJECT RAND: Astronomical Advantages of an Extra-Terrestrial Observatory, reprinted in *Astr. Quarterly*, volume 7, p. 131, 1990.
5. ^ Spitzer, Lyman S (1979), "History of the Space Telescope", *Quarterly Journal of the Royal Astronomical Society*, v. 20, p. 29
6. ^ "Gamma-Ray Astronomy in the Compton Era: The Instruments". *Gamma-Ray Astronomy in the Compton Era*. NASA/ GSFC. Archived from the original on 2009-02-24. Retrieved 2007-12-07.
7. ^ Watanabe, Susan (2007-11-22). "Studying the Universe in Infrared". NASA. Retrieved 2007-12-08.
8. ^ Kwok, Johnny (Fall 2006). "Finding a Way: The Spitzer Space Telescope Story". *Academy Sharing Knowledge*. NASA. Archived from the original on 2007-09-08. Retrieved 2007-12-09.
9. ^ Stern, David P. (2004-12-12). "(S-6) Seeing the Sun in a New Light". *From Stargazers to Starships*. NASA Goddard Space Flight Center. Retrieved 2007-12-07.
10. ^ Roman, Nancy Grace (2001). "Exploring the Universe: Space-Based Astronomy and Astrophysics" (PDF). *Exploring the Cosmos*. NASA. Retrieved 2007-12-08.
11. ^ Note: Gamma-rays from space can be detected indirectly from the ground by a technique known as Imaging Air Cherenkov Technique or IACT for short. It was pioneered by the Whipple Observatory in 1968 and several newer telescopes has been built in various countries since then.
12. ^ "Hubble Team Breaks Cosmic Distance Record". *Spitzer Space Telescope*. NASA. 3 March 2016. Retrieved 14 December 2016.
13. ^ Landau, Elizabeth (25 August 2016). "Spitzer Space Telescope Begins 'Beyond' Phase". NASA. Retrieved 9 December 2016.
14. ^ "About the James Webb Space Telescope". *Goddard Space Flight Center*. NASA. Retrieved 2018-12-20.
15. ^ "NASA's Shuttle and Rocket Missions — Launch Schedule". NASA. 2008-06-05.
16. ^ "Great Observatories". *Beyond Einstein*. NASA. Archived from the original on 2007-11-03. Retrieved 2007-11-28.
17. ^ Acuña, Mario H.; Keith W. Ogilvie; Robert A. Hoffman; Donald H. Fairfield; Steven A. Curtis; James L. Green; William H. Mish; the GGS Science Teams (1997-05-01). "The GGS Program". *ISTP-GGS/SOLARMAX Proposal*. *Goddard Space Flight Center*. Retrieved 2007-12-03.
18. ^{1,2} Scoles, Sarah (30 March 2016). "NASA Considers Its Next Flagship Space Telescope". *Scientific American*. Retrieved 2017-10-15.

IMAGE SOURCES

The background images used in this document are sections of >>this<< image, courtesy NASA/JPL-Caltech, retrieved 26.05.2020.

All other images used in this document were retrieved from Wikimedia Commons on the 26.05.2020

- a. ^ <https://commons.wikimedia.org/wiki/File:Ssc2004-15b.jpg>
- b. ^ https://commons.wikimedia.org/wiki/File:Chandra_artist_illustration.jpg
- c. ^ https://commons.wikimedia.org/wiki/File:STS-31_Hubble_launch_roll_and_pitch.jpg
- d. ^ https://commons.wikimedia.org/wiki/File:CGRO_s37-96-010.jpg
- e. ^ https://commons.wikimedia.org/wiki/File:Faring0814_03.jpg
- f. ^ [https://commons.wikimedia.org/wiki/File:Crab_Nebula_NGC_1952_\(composite_from_Chandra,_Hubble_and_Spitzer\).jpg](https://commons.wikimedia.org/wiki/File:Crab_Nebula_NGC_1952_(composite_from_Chandra,_Hubble_and_Spitzer).jpg)
- g. ^ [https://commons.wikimedia.org/wiki/File:James_Webb_Space_Telescope_Revealed_\(26832090085\).jpg](https://commons.wikimedia.org/wiki/File:James_Webb_Space_Telescope_Revealed_(26832090085).jpg)
- h. ^ <https://commons.wikimedia.org/wiki/File:IXOFlyby1Large.jpg>